

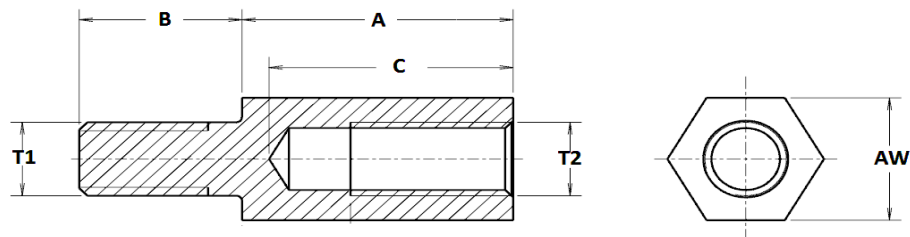
## For Reference Only (Customer Information Sheet)

DRAWING NO: RE / 1014 / 2013

NOT TO SCALE

IF IN DOUBT - ASK

TOLERANCE : +/- 0.5 (Unless Specified)



AW = 8 mm

PART NO.	A	B	C	T1 / T2
RE - 1001-271	10	10	6	M5
RE - 1001-272	15	10	8	M5
RE - 1001-273	20	10	8	M5
RE - 1001-274	25	10	8	M5
RE - 1001-275	30	10	8	M5
RE - 1001-276	35	10	8	M5
RE - 1001-277	40	10	8	M5
RE - 1001-278	45	10	8	M5
RE - 1001-279	50	10	8	M5

**NOTES:**

- 1) Special Finishes available on request.
- 2) All Dimensions are in mm.
- 3) Most Standard Pitch are available in Nuts.
- 3) Custom Made services are provided.



(An ISO 9001:2008 Certified Company)

This Document is property of Rachna Enterprise (India). All rights reserved. Copyright without permission is forbidden.

**MATERIAL :** Brass

CuZn39Pb3

**DRAWING NO:**

RE / 1014 / 2013

**TITLE:**

**M5 BRASS HEXAGON MALE / FEMALE  
THREADED STANDOFF PILLARS**

For Enquiry: Email: [info@rachnabrass.com](mailto:info@rachnabrass.com) | [export@rachnabrass.com](mailto:export@rachnabrass.com)

Website: [www.rachnabrass.com](http://www.rachnabrass.com)

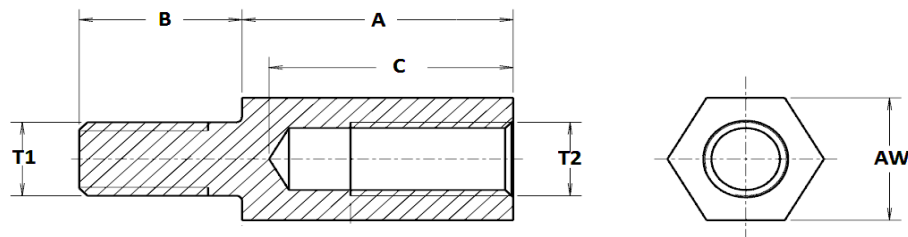
## For Reference Only (Customer Information Sheet)

DRAWING NO: RE / 1015 / 2013

NOT TO SCALE

IF IN DOUBT - ASK

TOLERANCE : +/- 0.5 (Unless Specified)



PART NO.	A	B	C	T1 / T2
RE - 1001-366	40	8	10	M5
RE - 1001-367	45	8	10	M5
RE - 1001-368	50	8	10	M5

AW = 10 mm

PART NO.	A	B	C	T1 / T2
RE - 1001-281	20	10	10	M5
RE - 1001-282	25	10	10	M5
RE - 1001-283	30	10	10	M5
RE - 1001-284	35	10	10	M5
RE - 1001-285	40	10	10	M5
RE - 1001-286	45	10	10	M5
RE - 1001-360	10	8	7	M5
RE - 1001-361	15	8	10	M5
RE - 1001-362	20	8	10	M5
RE - 1001-363	25	8	10	M5
RE - 1001-364	30	8	10	M5
RE - 1001-365	35	8	10	M5

**NOTES:**

- 1) Special Finishes available on request.
- 2) All Dimensions are in mm.
- 3) Most Standard Pitch are available in Nuts.
- 3) Custom Made services are provided.



This Document is property of Rachna Enterprise (India). All rights reserved. Copyright without permission is forbidden.

**MATERIAL :** Brass  
CuZn39Pb3  
**DRAWING NO:**  
RE / 1015 / 2013

**TITLE:**  
**M5 BRASS HEXAGON MALE / FEMALE  
THREADED STANDOFF PILLARS**

For Enquiry: Email: [info@rachnabrass.com](mailto:info@rachnabrass.com) | [export@rachnabrass.com](mailto:export@rachnabrass.com)

Website: [www.rachnabrass.com](http://www.rachnabrass.com)

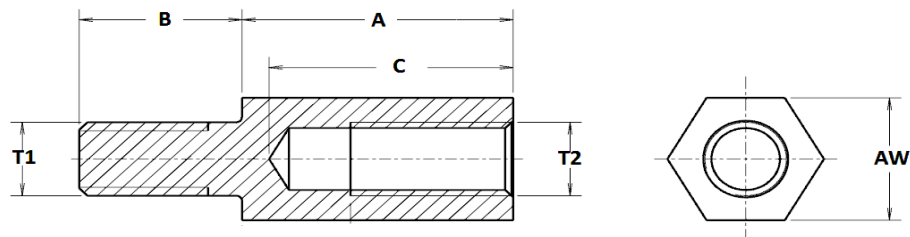
## For Reference Only (Customer Information Sheet)

DRAWING NO: RE / 1020 / 2013

NOT TO SCALE

IF IN DOUBT - ASK

TOLERANCE : + /- 0.5 (Unless Specified)



AW = 8 mm

PART NO.	A	B	C	T1 / T2
RE - 1001-345	10	8	5	M5
RE - 1001-332	12	8	6	M5
RE - 1001-333	15	8	10	M5
RE - 1001-334	20	8	10	M5
RE - 1001-335	25	10	12	M5
RE - 1001-336	30	10	12	M5
RE - 1001-337	35	10	12	M5
RE - 1001-338	40	10	12	M5
RE - 1001-339	45	10	12	M5
RE - 1001-340	50	10	12	M5



(An ISO 9001:2008 Certified Company)

This Document is property of Rachna Enterprise (India). All rights reserved. Copyright without permission is forbidden.

**MATERIAL :** Brass

CuZn39Pb3

**DRAWING NO:**

RE / 1020 / 2013

**TITLE:**

**M5 BRASS HEXAGON MALE / FEMALE  
THREADED STANDOFF PILLARS**

For Enquiry: Email: [info@rachnabrass.com](mailto:info@rachnabrass.com) | [export@rachnabrass.com](mailto:export@rachnabrass.com)

Website: [www.rachnabrass.com](http://www.rachnabrass.com)