

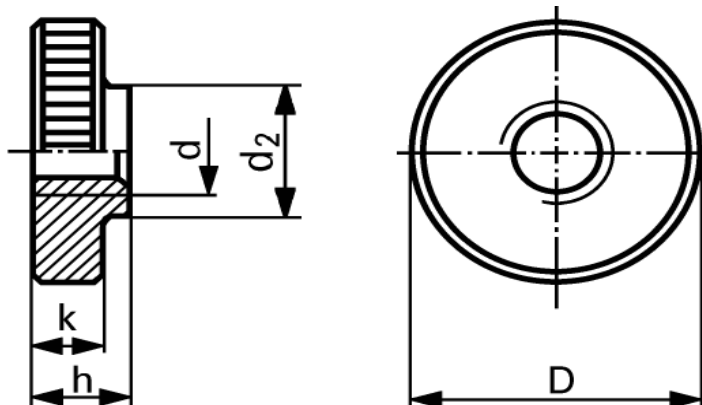
For Reference Only (Customer Information Sheet)

DRAWING NO: RE / 1006 / 2013

NOT TO SCALE

IF IN DOUBT - ASK

TOLERANCE : + /- 0.5 (Unless Specified)



PART NO.	d	d2	D	h	k
RE-1001-91	M3	6	12	3	2.5
RE-1001-92	M4	8	16	4	3.5
RE-1001-93	M5	10	20	5	4
RE-1001-94	M6	12	24	6	5
RE-1001-95	M8	16	30	8	6
RE-1001-96	M10	20	36	10	8

NOTES:

- 1) Special Finishes available on request.
- 2) All Dimensions are in mm.
- 3) Most Standard Pitch are available in Nuts.
- 3) Custom Made services are provided.



(An ISO 9001:2008 Certified Company)

This Document is property of Rachna Enterprise (India). All rights reserved. Copyright without permission is forbidden.

MATERIAL : Brass
CuZn39Pb3
DRAWING NO:
RE / 1006 / 2013

TITLE:
**BRASS - DIN 467 KNURLED
NUTS (LOW TYPE)**

For Enquiry: Email: info@rachnabrass.com | export@rachnabrass.com

Website: www.rachnabrass.com